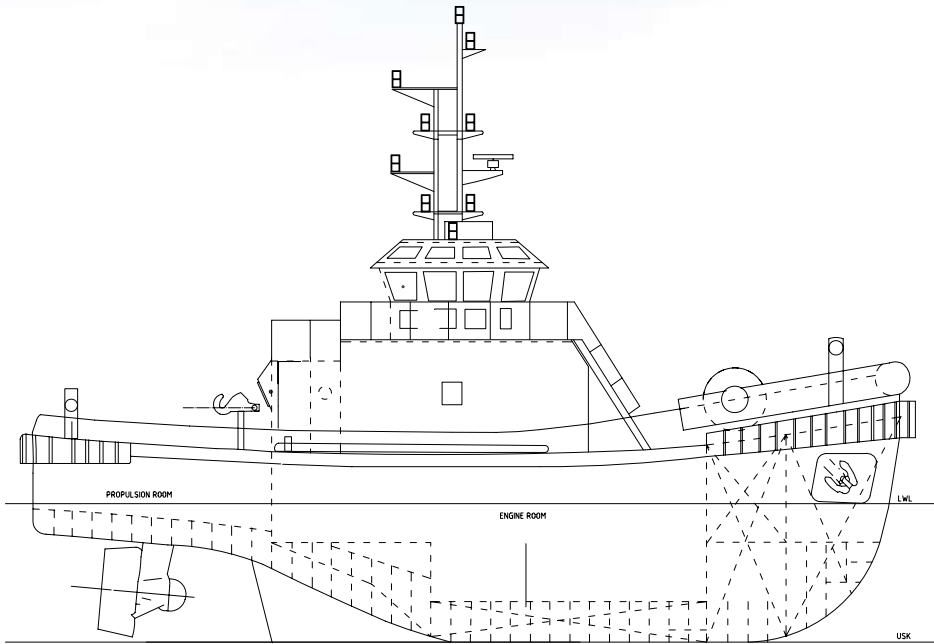


◆ Irishman, Yeoman, Guardsman

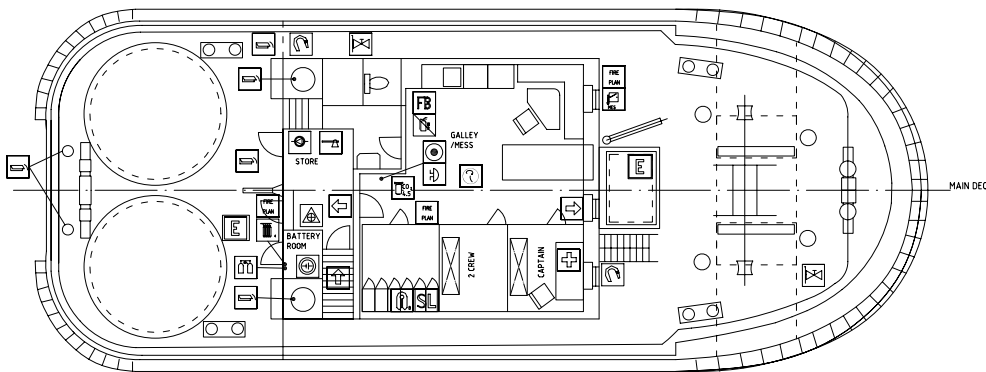
Call Sign/IMO	Irishman: VRZB6 / 8816338 - Yeoman: 2EYI8 / 8816326 - Guardsman: 2CXZ2 / 9015826
Built	03/1989 and 03/1991, Imamura Shipbuilding Co. Ltd, Kure, Japan
LOA	24.00m
Breadth	8.50m
Draft	3.50m
Speed	12.5Knts
Bollard Pull	40 Tonnes
GT & NT	GT: 188.12 / NT: 54.96
Class	Lloyds 100 A1 Tug
M/Engs	2 x Niigata 6L25CXE, 3,000 BHP @ 750 RPM
Propulsion	2 x Niigata ZP-2A Z-peller Azimuth Stern Drive Units with slipping clutches
Aux Engines	2 x 64KW 380V, 50 hz alternators driven by Yanmar 6CHL-HTN diesel engines
Rubber Fending System	Heavy duty fendering of both horizontal and vertical type with water lubrication on bow. Vertical stem fender and horizontal side fender systems
Electronics	2 x Sailor VHF, Radar: Furuno FR8030D, 12" x 48 miles, Echo Sounder: JRC Colour Echo sounder model, JFV 100M2, Fluxgate Compass, MD53 with dial repeater, Sestrel Minor overhead compass, AIS
Tank Capacities	Fresh Water: 35m ³
Forward Winch	Electro-hydraulic single drum with double warping heads and double gypsies. Recovery: 25m/min @ 2T or 65m/min @ 1T, Brake 60T. Fitted with 110m of 85mm supermix rope
Towing Hook	45T SWL fitted aft of the deckhouse with local and remotely controlled quick release device
Deck Equipment	Windlass: 2 x Electro hydraulic 2T @ 10m/min windlasses with 2 x 300 kg anchors each with 151m x 22mm chain
Accommodation	4 Berths. Air Conditioned. Accommodation space is arranged in the deckhouse on the Main Deck level with toilet, shower and laundry facilities



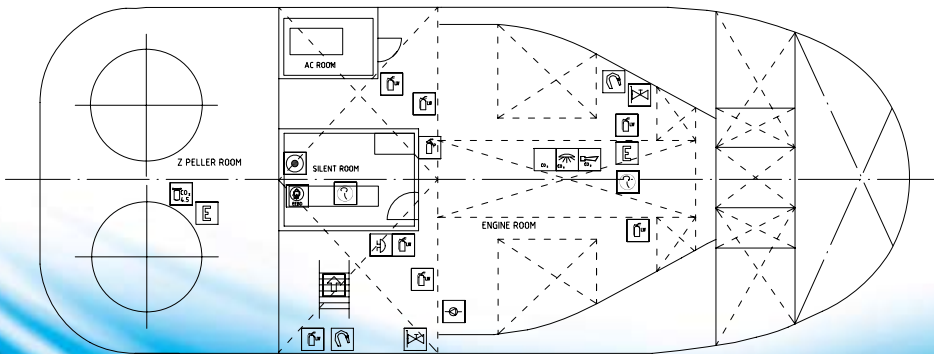
◆ Irishman, Yeoman, Guardsman



PROFILE



MAIN DECK PLAN



LOWER DECK PLAN



SMS Towage Limited

Ocean House, Waterside Park
Livingstone Road
Hessle, East Yorkshire
HU13 0EG
United Kingdom

Tel: +44 (0)1482 350999

Fax: +44 (0)1482 648284

Email: info@smstowage.com

Web: www.smstowage.com

