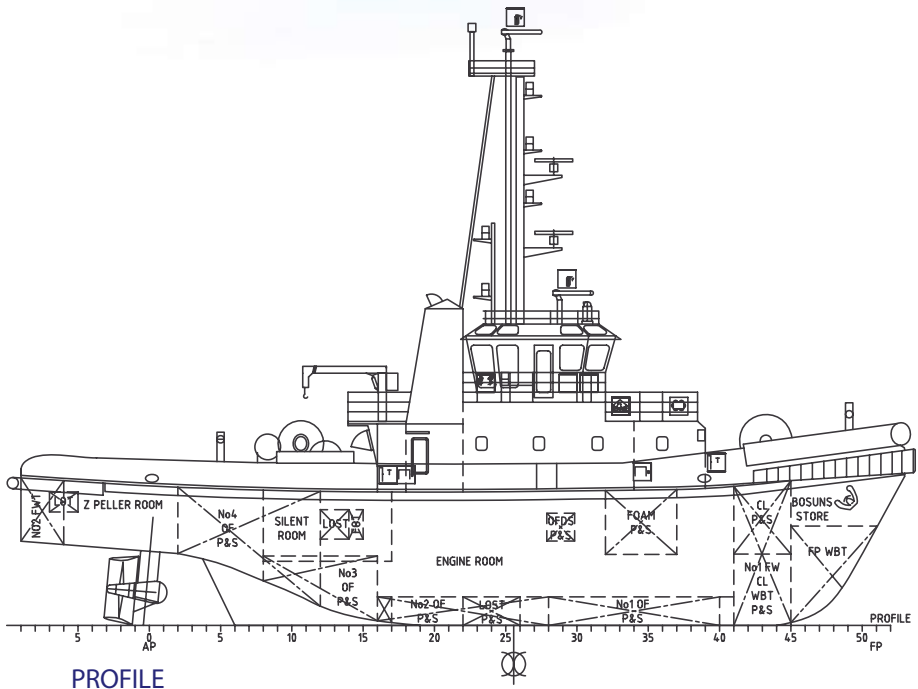


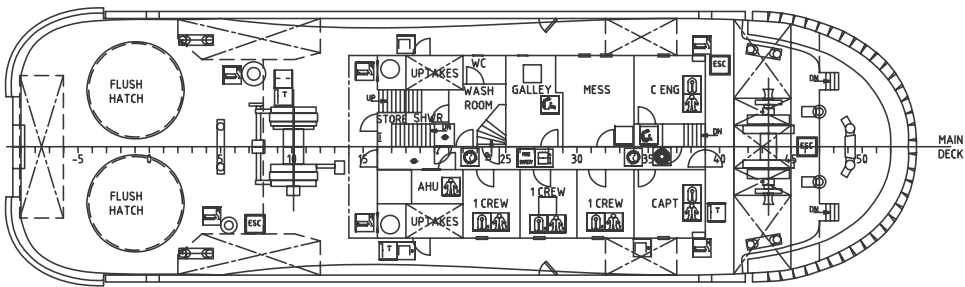
◆ Welshman

Call Sign/IMO	MXNS5 / 9178020
Built	01/1998, Japan
LOA	29.06m
Breadth	9.0m
Draft	3.7m
Speed	13.3Knts
Bollard Pull	50 Tonnes
GT & NT	GT: 292 / NT: 87
Class	Lloyds 100 A1 Tug
M/Engs	2 x Niigata 6L25HX. 3,600 BHP @ 900 RPM
Propulsion	2 x Niigata ZP-21FR Azimuth Stern Drive Units
Aux Engines	2 x Yanmar 6HALN
Fire Fighting	2 x Kashiwa monitors for both water and foam, 720m ³ /h each
Electronics	2 x Sailor VHF, Autopilot: Tokimec SN3171, Sat Compass: Furuno SC-50", Radar: 2 x Furuno FR-1942, GPS: Kodon HGP98D, Navtex, AIS
Tank Capacities	Fuel Oil: 120m ³ , Fresh Water: 30m ³ , Dispersant Tank: 11m ³
Aft Towing Winch	Electro-hydraulic single drum winch with single warping head and scrolling gear. Recovery: 24m/min @ 10T or 6m/min @ 40T, Brake: 80T, Capacity: 750m x 44 mm dia. wires
Forward Winch	Electro-hydraulic single drum with double warping heads and double gypsies. Recovery: 24m/min @ 1.5T or 12m/min @ 3T, Brake: 70T, Capacity: 300m x 76mm dia. Superline
Spare Wire	1 x 750m x 44mm wire
Deck Equipment	Crane: 1 x Nanse PC-253XG-D50 extending boom. Outreach, 0.95mt @ 4m / 0.49mt @ 6.5m. FRC: 1 x DSB rescue craft, complete with 25 BHP Mercury outboard.
Accommodation	2 x single berth cabins, 3 x 2 berth cabin, messroom, galley all on main deck level.

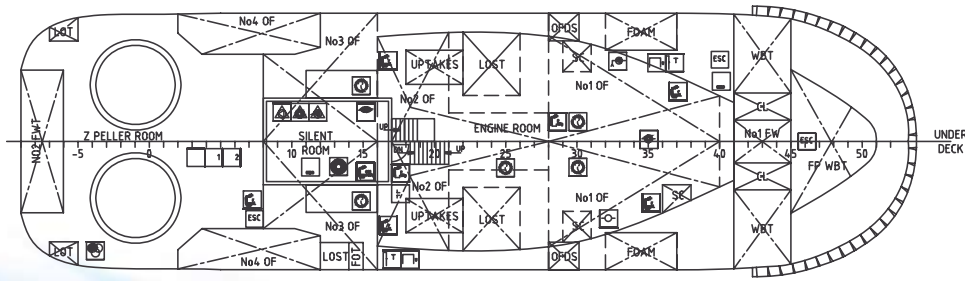




PROFILE



MAIN DECK PLAN



LOWER DECK PLAN

SMS Towage Limited

Ocean House, Waterside Park
Livingstone Road
Hessle, East Yorkshire
HU13 0EG
United Kingdom

Tel: +44 (0)1482 350999
Fax: +44 (0)1482 648284
Email: info@smstowage.com
Web: www.smstowage.com

