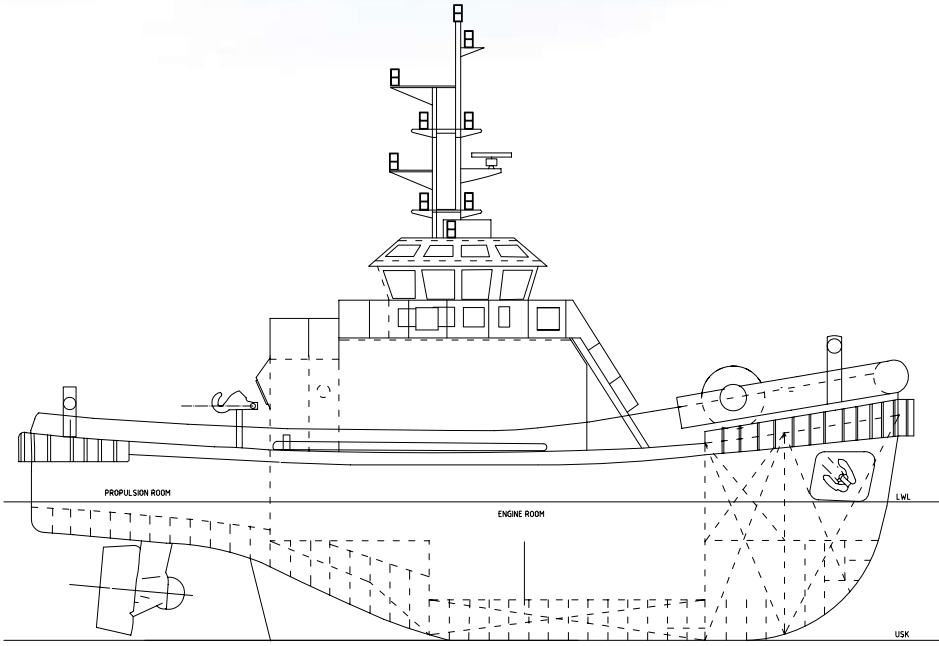


# ◆ Tradesman, Trueman

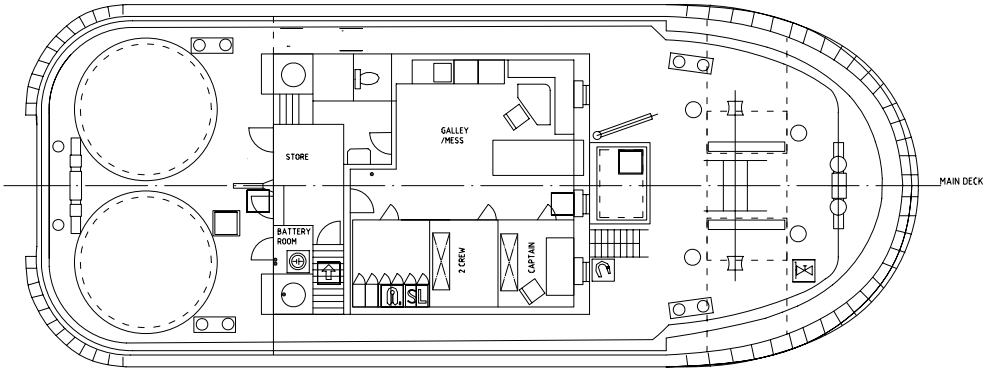
<b>Call Sign/IMO</b>	<b>Tradesman:</b> 2BNO7 / 8704274 - <b>Trueman:</b> 2BNP2 / 8704268
<b>Built</b>	07/1987, Imamura Shipbuilding Co.Ltd, Kure, Japan
<b>LOA</b>	22.60m
<b>Breadth</b>	8.50m
<b>Draft</b>	3.50m
<b>Speed</b>	11.8Knts
<b>Bollard Pull</b>	35 Tonnes
<b>GT &amp; NT</b>	GT: 131.57 / NT: 53.06
<b>Class</b>	Lloyds 100 A1 Tug
<b>M/Engs</b>	2 x Niigata 6L25CXE, 2,600 BHP @ 720 RPM
<b>Propulsion</b>	2 x Niigata ZP-2A Z-peller Azimuth Stern Drive Units with slipping clutches
<b>Aux Engines</b>	2 x 64 kw 380V, 50 hz alternators driven by Yanmar 6CHL-HTN diesel engines
<b>Rubber Fending System</b>	Heavy duty fendering of both horizontal and vertical type with water lubrication on bow. Vertical stem fender and horizontal side fender systems
<b>Electronics</b>	2 x Sailor VHF, Radar: Furuno FR8030D, 12" x 48 miles, Echo Sounder: JRC Colour Echo sounder model, JFV 100M2, Fluxgate Compass, MD53 with dial repeater, Sestrel Minor overhead compass, AIS
<b>Tank Capacities</b>	Fresh Water: 35m <sup>3</sup>
<b>Forward Winch</b>	Electro-hydraulic single drum with double warping heads and double gypsies. Recovery: 25m/min @ 2T or 65m/min @ 1T, Brake 60 T. Fitted with 110m of 85mm supermix rope
<b>Towing Hook</b>	40 T SWL fitted aft of the deckhouse with local and remotely controlled quick release device
<b>Deck Equipment</b>	Windlass: 2 x Electro hydraulic 2 T @ 10m/min windlasses with 2 x 300 kg anchors each with 151m x 22mm chain. Cargo Capacity: 20T
<b>Accommodation</b>	4 Berths. Air Conditioned. Accommodation space is arranged in the deckhouse on the Main Deck level with toilet, shower and laundry facilities



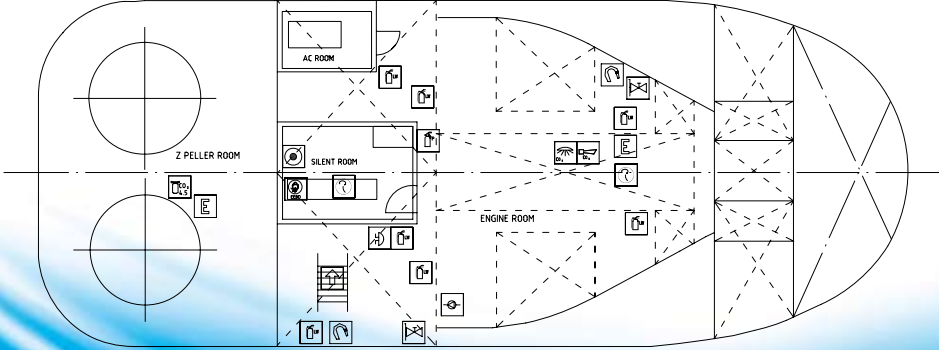
# ◆ Tradesman, Trueman



PROFILE



MAIN DECK PLAN



LOWER DECK PLAN



**SMS Towage Limited**  
Ocean House, Waterside Park  
Livingstone Road  
Hessle, East Yorkshire  
HU13 0EG  
United Kingdom

**Tel:** +44 (0)1482 350999  
**Fax:** +44 (0)1482 648284  
**Email:** [info@smstowage.com](mailto:info@smstowage.com)  
**Web:** [www.smstowage.com](http://www.smstowage.com)



for **all** your marine + towage requirements