



# Associated British Ports South Wales

## NOTICE TO MARINERS

NO 34 OF 2017

### Survey of Culver Sands

As of the 1<sup>st</sup> September 2017 a survey of the Culver Sands will commence for approximately 20 days by the vessels Titan Explorer and Titan Endeavour  
See attached information

#### **NOTICE TO MARINERS**

Project: 2017 Culver Sand Monitoring and Culver Sand Extension Baseline Survey

Client: Resource Management Association (Tarmac Marine Ltd, Cemex UK Marine Ltd and Hanson Aggregates Marine Ltd)

Date of Issue: Friday 1<sup>st</sup> September 2017

**Scope of Work:** Mariners are advised that the survey vessels, *MV Titan Endeavour* and *MV Titan Explorer*, will be conducting a detailed hydrographic and geophysical survey, mapping the seabed in the existing Aggregate Licence Area 472 and the adjacent Licence Area 526. The survey is on behalf of the Resource Management Association and is expected to require 20 field days starting in early September. The project duration is however weather dependent.

Both vessels will be displaying the relevant IRPCS day shapes and night lights and will be restricted in their ability to manoeuvre. They will be towing underwater sensors up to about 100m astern. A small grab sampling programme will also be carried out towards the end of the survey programme. A safe operating distance is requested around the survey vessels at all times.

#### **Vessel contact details:**

Vessel	Compliance
--------	------------



**MV TITAN EXPLORER**  
MCA SCV Code Category 2  
(60 miles from a safe haven)



**MV TITAN ENDEAVOUR**  
MCA SCV Code Category 2  
(60 miles from a safe haven)

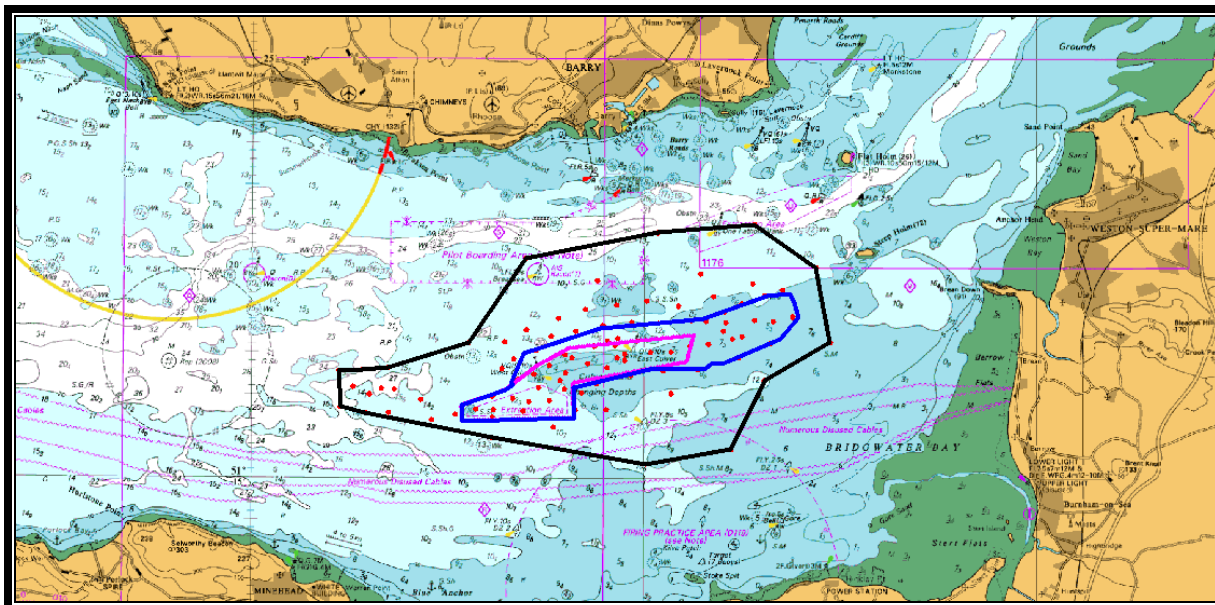
MV Titan Explorer	
GSM	07884 068448
Email	<a href="mailto:titan.explorer@titansurveys.co.uk">titan.explorer@titansurveys.co.uk</a>
Call Sign	MZUZ2
MMSI	232004757
VHF Channel	16

Survey

Area:

MV Titan Endeavour	
GSM	07764 253364
Email	<a href="mailto:titan.endeavour@titansurveys.co.uk">titan.endeavour@titansurveys.co.uk</a>
Call Sign	2ELT9
MMSI	235086211
VHF Channel	16

CS0519/CS0520 – Licence Area 472 and Licence Area 526



Main Survey Area enclosed by blue line.  
 Grab Survey Area enclosed by black line.

**Co-ordinates of operations (WGS84)**

<b>CS0519/CS0520 - Licence Area 472 and Licence Area 526</b>				
<b>Polygon Total Area 32 km<sup>2</sup></b>				
Point	Latitude D.D (N)	Longitude D.D (- = W)	Latitude D M.M (N)	Longitude D M.M (W) (- = W)
1	51 17.96660	-3 19.64170	51.29944	-003.32736
2	51 18.56790	-3 16.70800	51.30946	-003.27847
3	51 18.75590	-3 13.50900	51.31260	-003.22515
4	51 18.80060	-3 12.74780	51.31334	-003.21246
5	51 19.34440	-3 10.32120	51.32241	-003.17202
6	51 19.36580	-3 09.92300	51.32276	-003.16538
7	51 19.39420	-3 09.45780	51.32324	-003.15763
8	51 19.18630	-3 09.30070	51.31977	-003.15501
9	51 18.82550	-3 09.12250	51.31376	-003.15204
10	51 18.32320	-3 09.83720	51.30539	-003.16395
11	51 17.70560	-3 12.04840	51.29509	-003.20081
12	51 17.71150	-3 12.47980	51.29519	-003.20800
13	51 17.62070	-3 12.66130	51.29368	-003.21102
14	51 17.59120	-3 12.79240	51.29319	-003.21321
15	51 17.57300	-3 14.80090	51.29288	-003.24668
16	51 17.13581	-3 17.72232	51.28560	-003.29537
17	51 16.41920	-3 17.69880	51.27365	-003.29498
18	51 16.33080	-3 21.96610	51.27218	-003.36610
19	51 16.71380	-3 21.99260	51.27856	-003.36654
20	51 17.06780	-3 20.33950	51.28446	-003.33899
21	51 17.21356	-3 20.03899	51.28689	-003.33398
22	51 17.24460	-3 20.10080	51.28741	-003.33501
23	51 17.96660	-3 19.64170	51.29944	-003.32736

**Enquiries:**

Any enquiries regarding this notice should be directed to:

Cemex Marine UK Ltd:  
 Joe Holcroft (Project Manager)  
 02380 720217  
[joseph.holcroftj@cemex.com](mailto:joseph.holcroftj@cemex.com)

Titan Environmental Surveys:  
 Vince Grove (Principal Geophysicist)  
 01493 845638  
[vince.grove@titansurveys.com](mailto:vince.grove@titansurveys.com)

Harbourmaster  
 South Wales

**HARBOUR MASTER SOUTH WALES**  
 Queen Alexandra House, Cargo Road, CARDIFF, CF10 4LY  
 31<sup>st</sup> August 2017

All ABP South Wales Notices to Mariners may be viewed on: - [www.southwalesports.co.uk](http://www.southwalesports.co.uk)

Owners, Agents and Charters should ensure that the contents of this notice are made known to the masters or persons in charge of their vessel or craft.