



Velothon Wales
Run 4 Wales – Pod 1
Capital Retail Park
Leckwith Road
Cardiff
CF11 8EG

029 2166 0790
route@velothonwales.co.uk



Velothon Wales
Run 4 Wales – Pod 1
Capital Retail Park
Leckwith Road
Cardiff
CF11 8EG

029 2166 0790
route@velothonwales.co.uk

Annwyl Preswyllydd,

GWYBODAETH BWYSIG – VELOTHON CYMRU 22AIN O FAI 2016

Ar ddydd Sul yr 22ain o Fai 2016, bydd Velothon Cymru yn dychwelyd i ffyrdd De Cymru. Bydd y digwyddiad yn croesawu tua 15,000 o feicwyr hamdden, gyda llawer yn codi arian i elusen yn ogystal â rhai o feicwyr gorau'r byd fel rhan o ras ffyrdd proffesiynol UCI.

Bydd y ffyrdd caeedig o 140km yn cymryd cyfranogwyr ar daith trwy galon Caerdydd i Gasnewydd, Caerllion, Wysg ag i fyny'r Tymbl cyn teithio i'r De trwy Flaenafon, Pont-y-pŵl, Caerffili â nôl i Gaerdydd dros y llinell derfyn. Rhagwelwn bydd dros £1 miliwn yn cael eu codi i amrywiaeth o elusennau ac achosion da.

Mae'n angenrheidiol i ni gau'r ffyrdd oherwydd graddfa'r digwyddiad ac i diogelu'r beicwyr.

RHYBUDD: MAE'R FFYRDD CAEEDIG YN EFFEITHIO AR EICH ARDAL CHI AMSEROEDD CAU FFYRDD DROSODD

Bwriad y llythyr yma yw i'ch rhybuddio am y digwyddiad o flaen llaw, ac i arddangos y llwybr ac amseroedd cau'r ffyrdd sydd yn effeithio ar eith awdurdod lleol. Drosodd, gallwch weld amseroedd cau ffyrdd yn fanwl ac mae map rhyngweithiol ar gael ar www.velothon-wales.co.uk

Os ydych oes unrhyw gyfrifoldebau neu ddigwyddiadau wedi'i threfnu ar y 22ain o Fai megis digwyddiadau ffurfiol, dyletswyddau gofal neu deithio i'ch gwyliau, gofynnwn i chi rhoi gwybod i ni cyn gynted ag sy'n bosib. Byddwn yn gwneud y gorau gallwn i ddarparu gwybodaeth ar y ffyrdd gorau o gwmpas y ffyrdd caeedig.

Rydym eisiau ymddiheuro o flaen llaw am unrhyw drafferth achoswyd. Byddwn yn ceisio cadw unrhyw amhariad i leiafswm. Hoffwn ddiolch am eich dealltwriaeth, cefnogaeth a chydweithrediad yn ystod yr amser yma.

Beth am ymuno â ni?

I ddiolch i chi am eich cydweithrediad rydym yn falch i gynnig 10% o fynediad y ras, od hoffech chi gymryd rhan yn Velothon Cymru 2016. I hawlio'r cynnig unigryw yma, ewch i www.velothon-wales.co.uk a defnyddiwch y côd **RESIDENT** ar y dudalen taliad wrth gofrestru.

Os nad ydych am gymryd rhan, rydym yn annog i chi ymuno â'r miloedd o gystadleuwyr i gefnogi'r beicwyr.

Am unrhyw ymholiadau am y llwybr neu'r ffyrdd caeedig, e-bostiwch route@velothonwales.co.uk neu ffoniwch 029 21 660 790. Am wybodaeth gyffredinol am Velothon Cymru, ewch i www.velothon-wales.co.uk neu e-bostiwch helpdesk@velothonwales.co.uk.

MAP O'R LLWYBR DROSODD

CASNEWYDD

Dear Resident,

IMPORTANT INFORMATION - VELOTHON WALES SUNDAY 22ND OF MAY 2016

On **Sunday the 22nd of May 2016**, Velothon Wales will return to the roads of South Wales. The event will once again welcome up to 15,000 recreational cyclists and charity fundraisers as well as some of the world best cyclists as part of the UCI sanctioned professional road race.

The completely closed road 140km route will take participants on a journey from the heart of Cardiff through to Newport, Caerleon, Usk and up the Tumble before heading South through Blaenavon, Pontypool, Caerphilly and back into Cardiff where cyclists will cross the finish line. Many will be fundraising, and in line with 2015 it's predicted that over £1 million will be raised for charities and good causes.

Due to the scale of the event, it will be necessary to implement road closures along the route to facilitate the safe passage of the participants.

PLEASE NOTE: THE PLANNED ROAD CLOSURES FOR THE EVENT WILL AFFECT YOUR AREA PRECISE ROAD CLOSURE TIMINGS OVERLEAF

The aim of this letter is to give you advance notice of the event and showcase the proposed route, with specific detail on the part of the route which goes through your local authority. **Precise road closure timings** can be seen overleaf and a detailed interactive map is available at www.velothon-wales.co.uk

If you are already aware of anything that will impact you on the **22nd May** such as formal events, carer responsibilities and holiday travel, please let us know as soon as possible and we will do all we can to provide more information on how you can best navigate your way around the road closures.

We apologise in advance for any inconvenience this may cause and assure you that we will try to keep any disruption to a minimum. We wish to thank you for your understanding and we are grateful of your support and cooperation.

WHY NOT JOIN US?

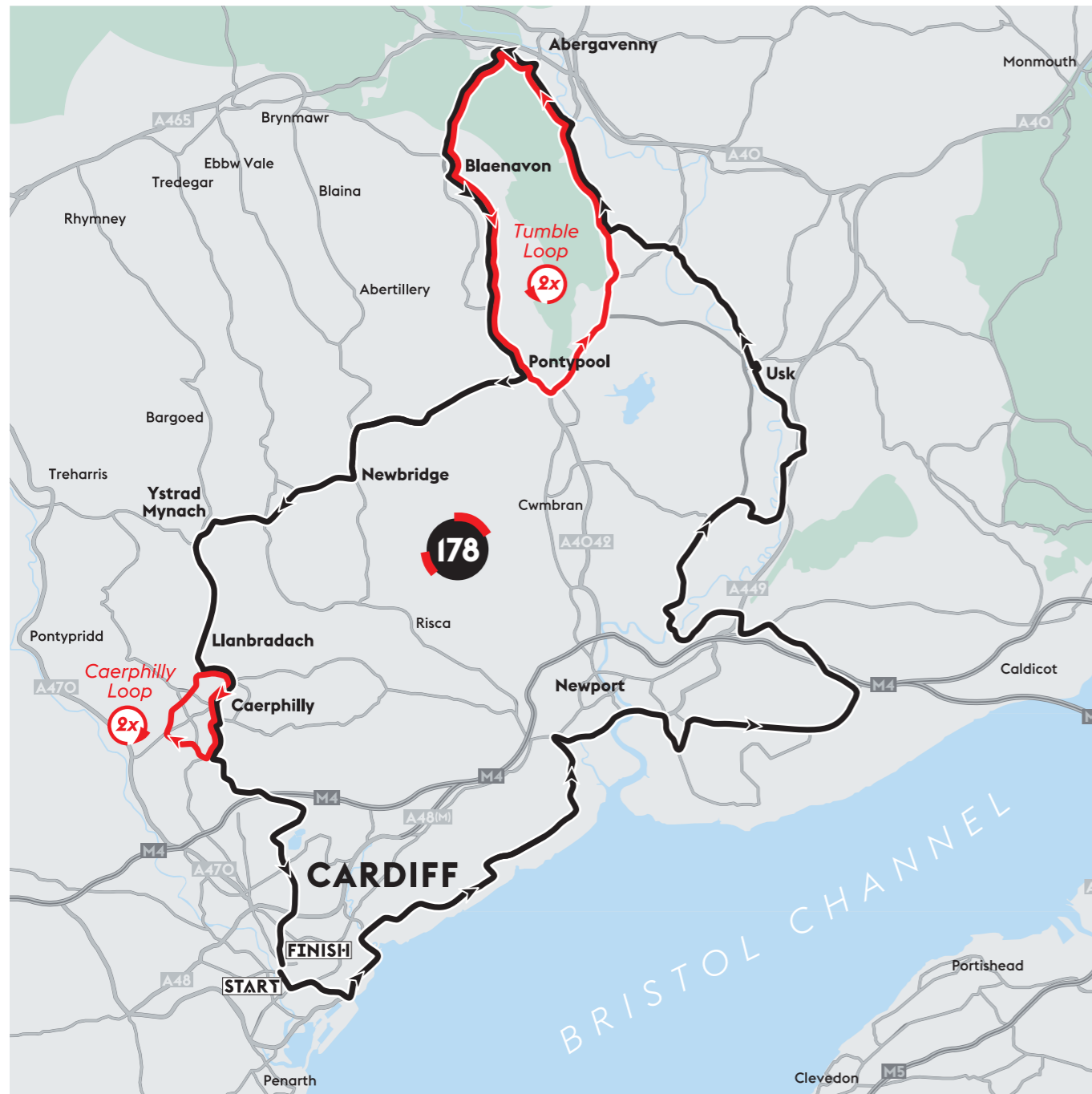
To thank you for your cooperation we are delighted to offer you 10% off entry should you wish to take part in Velothon Wales 2016. To claim this exclusive offer, simply visit www.velothon-wales.co.uk and enter the code **RESIDENT** on the payment page of the registration process.

If you are not taking part, we encourage you to turn out on the day to join the thousands of spectators who will be cheering on the cyclists.

Email route@velothonwales.co.uk with queries regarding the route and subsequent road closures or call 029 21 660 780. For general information visit www.velothon-wales.co.uk or email helpdesk@velothonwales.co.uk.

ROUTE MAP OVERLEAF

NEWPORT



To view road closure timings in other areas, please visit www.velothon-wales.co.uk, click 'Route' then select 'Road Closures'.

CARDIFF:

- A48, Eastern Avenue and M4 fully open
- Lisvane Rd – Resident access between Mill Rd and Everest Ave – Traffic Light System in place
- Access to ABP Cardiff Port via Westgate Only
- Central Link to Tyndall St – Westbound Only

NEWPORT:

- Eastbound SDR and Queen's Way Open
- Corporation Rd and Eastbound SDR crossing open 06:15am – 07:15am/ 10:45am – 13:00pm/ 14:00pm
- Newport Retail Park – Access Open
- Access to ABP Newport Port via Westgate Only
- Access from SDR to Lee Way open

MONMOUTHSHIRE:

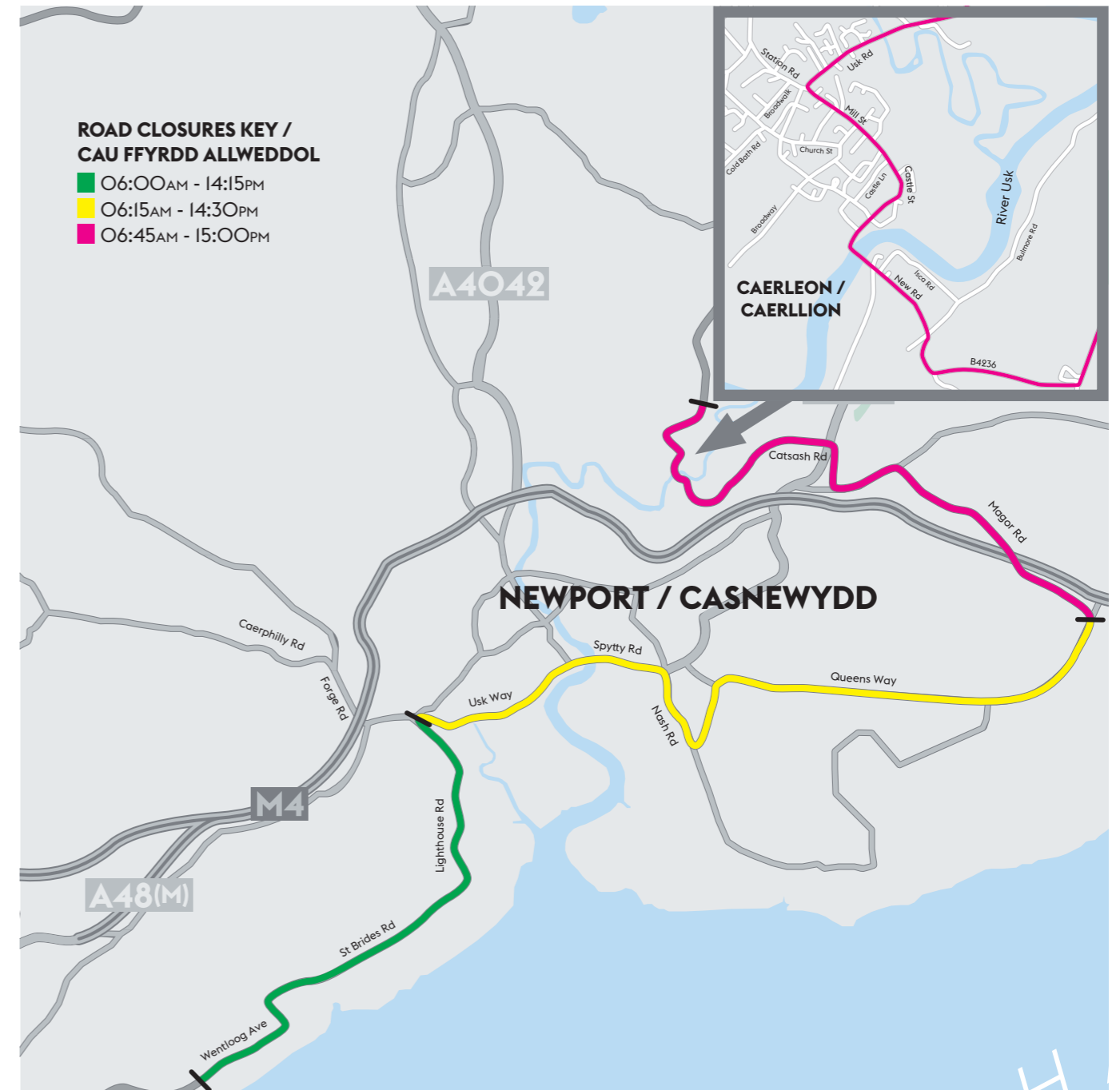
- Access available on Usk Rd between the Cwrt Bleddyn Hotel and Spa to Little Mill
- Access available on A4042 from Little Mill to Cwmbran Roundabout – Southbound only
- Local Access available between Little Mill and Nant-y-Derry – expect delays between 14:30pm – 15:30pm.

TORFAEN:

- B4246 (Varteg Rd) to B4248 and Heads of the Valley Rd
- Pontypool (Recem) Roundabout open

CAERPHILLY:

- Panside – Central Ave and A467 Abercarn – traffic light system in place
- A469 Northbound open from Caerphilly to Ystrad Mynach
- A469 Southbound lane open from Coed-y-Brain Roundabout to Pwllpant Roundabout.
- Access available to Morrisons from Landsbury Park
- Access available – Crumlin Rd – A467 Northbound – traffic light system in place



I weld amseroedd cau'r ffyrdd yn ardaloedd eraill, ewch i www.velothon-wales.co.uk, cliciwch 'Route' â dilynnwch 'Road Closures'.

CAERDYDD:

- A48, Eastern Avenue a'r M4 ar agor
- Heol Lisvane – Mynediad i drigolion rhwng Heol Mil a Everest Ave – System goleuadau traffig yn ei le
- Mynediad i Borthladd ABP Caerdydd trwy Westgate yn unig
- Ffordd Gyswllt Ganolog i Stryd Tyndall – Tua'r Gorllewin yn unig

CASNEWYDD:

- SDR tua'r dwyrain a Queensway ar agor
- Heol Corporation a Chroesfan yr SDR tua'r dwyrain ar agor 06:15yb – 07:15yb/ 10:45yb – 13:00yh/ 14:00yh
- Parc Adwerthu Casnewydd – Mynediad ar agor
- Mynediad i Borthladd ABP Casnewydd trwy Westgate yn unig
- Mynediad o'r SDR i Lee Way ar agor

SIR FYNWY:

- Mynediad ar gael ar Ffordd Wysg rhwng Gwesty a Sba'r Cwrt Bleddyn i Little Mill
- Mynediad ar gael ar yr A4042 o Little Mill i Gylchfan Cwmbran – I'r De yn unig
- Mynediad Lleol ar gael rhwng Little Mill a Nant-y-derry – Disgwyl oedi rhwng 14:30yh – 15:30yh

TORFAEN:

- B4246 (Heol Varteg) i'r B4248 a Heol Blaenau'r Cymoedd
- Cylchfan Pontypool (Recem) ar agor

CAERFFILI:

- Panside – Central Ave a A467 Abercarn – system goleuadau traffig yn ei le
- A469 i'r Gogledd ar agor o Gaerffili i Ystrad Mynach
- Llwybr yr A469 i'r De ar agor o Gylchfan Coed-Y-Brain i Gylchfan Pwllpant
- Mynediad ar gael i Morrisons o Barc Landsury
- Mynediad ar gael – Heol Crumlin – A467 tua'r Gogledd – system goleuadau traffig yn ei le