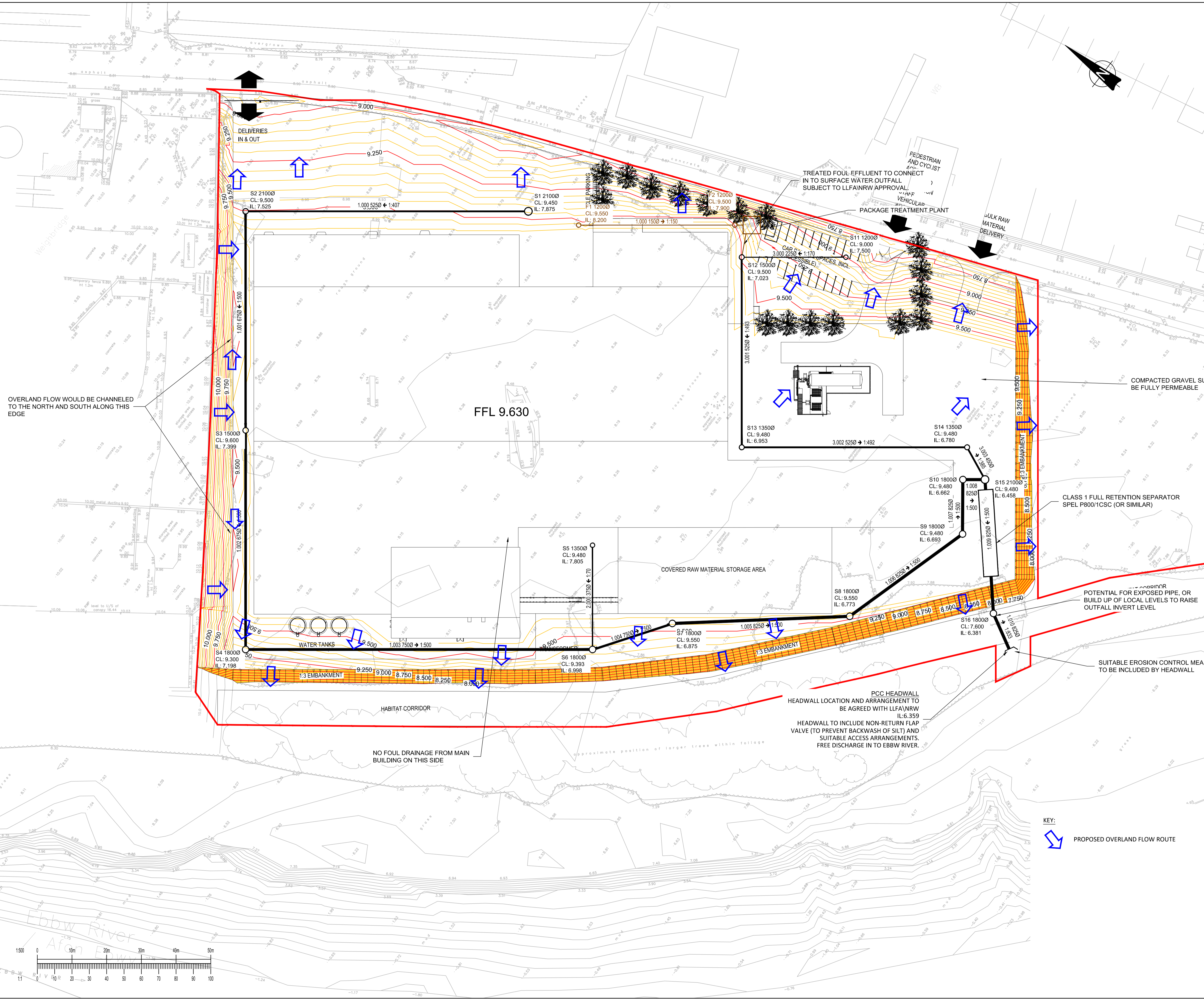


GENERAL NOTES:

1. THIS DRAWING IS TO BE READ IN CONJUNCTION WITH ALL RELEVANT ARCHITECTS AND ENGINEERS DRAWINGS AND SPECIFICATIONS.
2. DO NOT SCALE THIS DRAWING. ANY AMBIGUITIES, OMISSIONS AND ERRORS ON DRAWINGS SHALL BE BROUGHT TO THE ENGINEERS ATTENTION IMMEDIATELY. ALL DIMENSIONS MUST BE CHECKED / VERIFIED ON SITE.
3. ALL DIMENSIONS ARE IN MILLIMETRES UNLESS NOTED OTHERWISE.
4. FOR GENERAL NOTES REFER TO DRAWING.



OVERLAND FLOW WOULD BE CHANNELLED TO THE NORTH AND SOUTH ALONG THIS EDGE

FFL 9.630

COMPACTED GRAVEL SURFACING WILL BE FULLY PERMEABLE

CLASS 1 FULL RETENTION SEPARATOR SPEL P800/1CSC (OR SIMILAR)

POTENTIAL FOR EXPOSED PIPE, OR BUILD UP OF LOCAL LEVELS TO RAISE OUTFALL INVERT LEVEL

SUITABLE EROSION CONTROL MEASURE TO BE INCLUDED BY HEADWALL

PCC HEADWALL HEADWALL LOCATION AND ARRANGEMENT TO BE AGREED WITH LLFA/NRW IL:6.359 HEADWALL TO INCLUDE NON-RETURN FLAP VALVE (TO PREVENT BACKWASH OF SILT) AND SUITABLE ACCESS ARRANGEMENTS. FREE DISCHARGE IN TO EBBW RIVER.

NO FOUL DRAINAGE FROM MAIN BUILDING ON THIS SIDE

KEY:
 PROPOSED OVERLAND FLOW ROUTE

P03	SITE PLAN REVISED	22/01/20	SD	DJ
P02	BOUNDARY LINE CORRECTED	20/12/19	TN	TN
P01	FIRST ISSUE	03/12/19	TN	DJ
Rev:	Description:	Date:	By:	Chkd:



3 Owen-y-Parc, Earlswood Road, Cardiff, CF14 5GH
 029 2068 9900
 cardiff@curtins.com
 www.curtins.com

Skills & Structures • Transport Planning • Environmental • Infrastructure • Geotechnical • Conservation & Heritage • Principal Designer
 Birmingham • Bristol • Cambridge • Cardiff • Douglas • Dublin • Edinburgh • Glasgow • Leeds • Liverpool • London • Manchester • Nottingham

Status:	PLANNING	S2					
Project:	ABP NEWPORT DOCKS						
Dig Title:	OVERLAND FLOW ROUTES						
Size:	Date:	Drawn By:	Designed By:	Checked By:			
A1	03/12/2019	TN	TN	DJ			
Scale:	1:500						
Project No:	Originator:	Volume:	Level:	Type:	Role:	Category / Number:	Rev:
72689 - CUR - 00 - XX - DR - C -						92001 - P03	