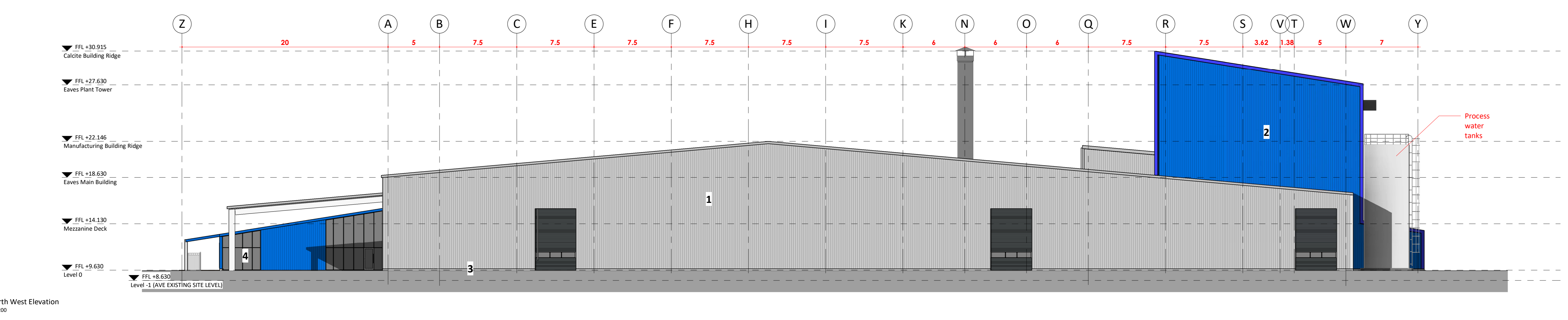
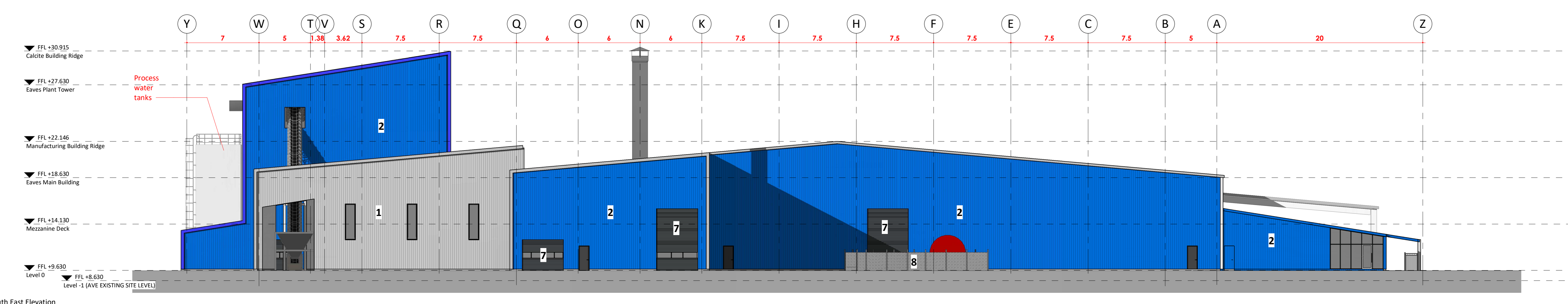
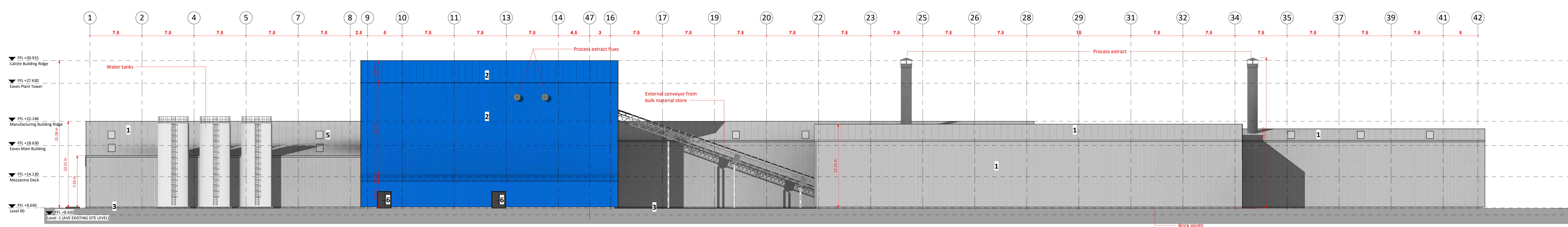
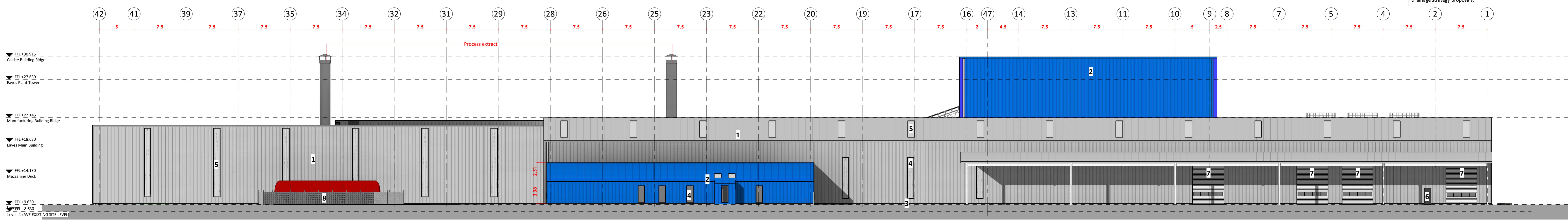


Responsibility is not accepted for errors made by others in scaling from this drawing.  
 All construction information should be taken from figured dimensions only.

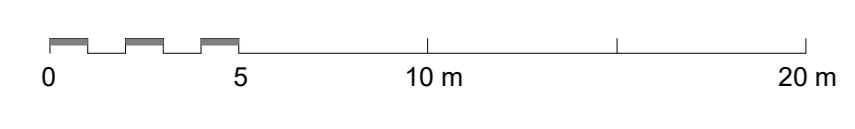
0mm 50mm 100mm

**ALL DIMENSIONS IN METERS**

See drawing number 72689-CUR-00-XX-DR-C-SK001 for further detail regarding existing and proposed levels.  
 See drawing number 72689-CUR-00-XX-DR-C-92000 for details of drainage strategy proposals.



- 1** Grey insulated built-up cladding system
- 1a** Single skin profiled metal cladding - Grey
- 2** Blue insulated built-up cladding system
- 3** Concrete upstand
- 4** Double glazed PPC aluminium windows in RAL 7012
- 5** Translucent roof lights/windows as part of cladding system
- 6** Steel doors in RAL 7012
- 7** Roller shutter doors in RAL 7012
- 8** Chain link fence in RAL 7012



PL P29 21/03/2020 PLANNING ISSUE  
 STATUS | REV | DATE | DESCRIPTION

Associated British Ports

REVISOR BY: Gareth Brown  
 CHECKED BY: Martin Long  
 ORIGINATOR NO: 153091

CONSULTANT  
**STRIDE TREGLOWN**  
 www.stride-treglow.com © Stride Treglow Limited 2017

PROJECT  
**ABP New Manufacturing Plant**  
 Land adjacent West Way Road  
 Alexandra Docks  
 Newport

DRAWING TITLE  
**Proposed Elevations**

SUITABILITY STATUS  
 PL : PLANNING

SCALE  
 1 : 200 @ AO

PROJECT | ORIGINATOR | ZONE | LEVEL | TYPE | ROLE | CLASS | NUMBER | REVISION  
 153091-STL-00-ZZ-DR-A-ZZZZ-02001 P29