

- Admin
- Calcining Plant
- Loads and Shipment
- Manufacture
- Operatives
- Plant & Services
- Process Equipment
- Production Control
- Area Types

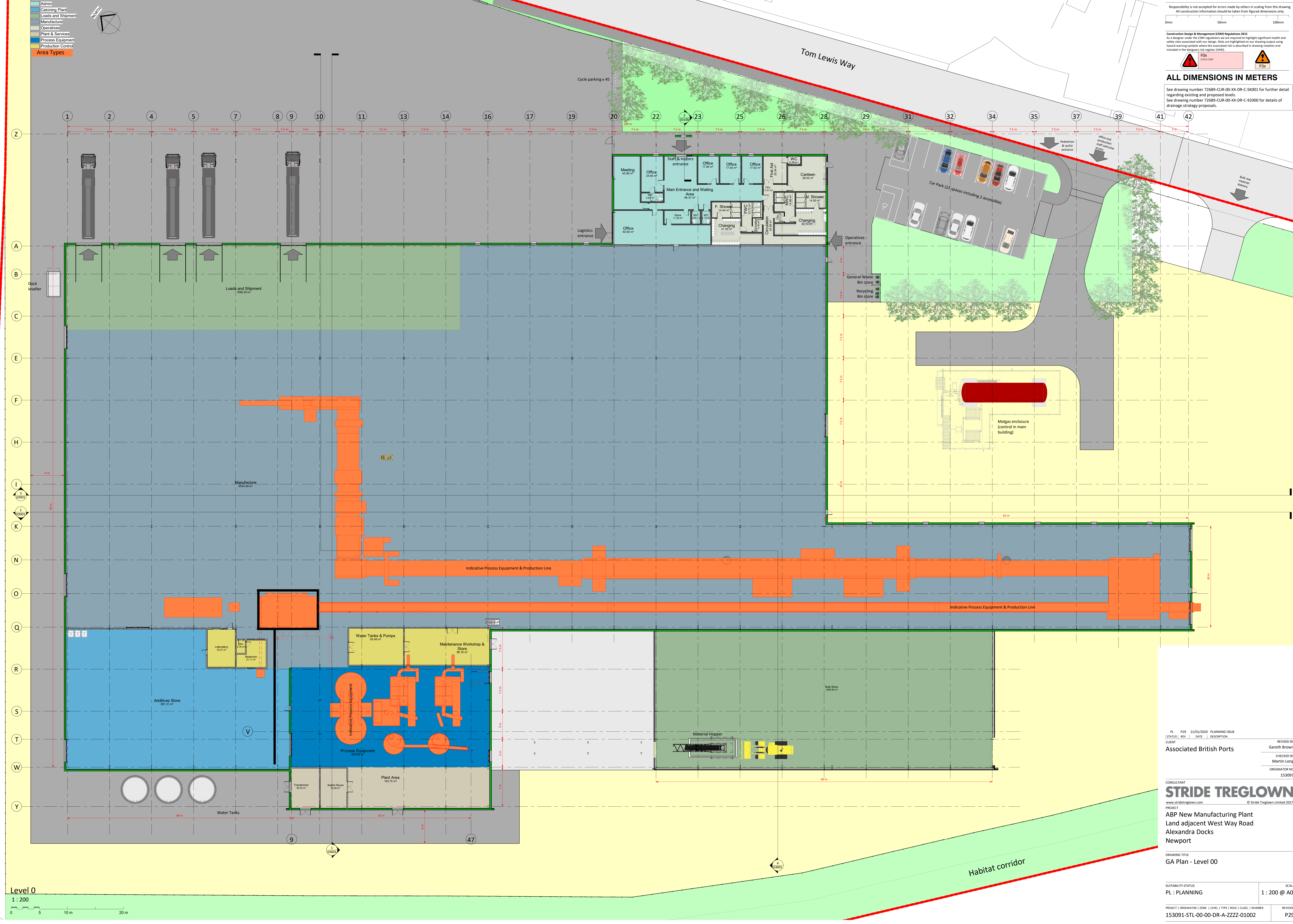
Responsibility is not accepted for errors made by others in scaling from this drawing. All construction information should be taken from figured dimensions only.

Construction Design & Management (CDM) Regulations 2015  
 As a designer under the CDM regulations we are required to highlight significant health and safety risks associated with our design. Risks are highlighted on our drawing output using hazard warning symbols where the associated risk is described in drawing notation and included in the designers risk register (DARR).



**ALL DIMENSIONS IN METERS**

See drawing number 72689-CUR-00-XX-DR-C-SK001 for further detail regarding existing and proposed levels.  
 See drawing number 72689-CUR-00-XX-DR-C-92000 for details of drainage strategy proposals.



PL	P29	21/05/2020	PLANNING ISSUE	REVISED BY	Gareth Brown
STATUS	REV	DATE	DESCRIPTION	CHECKED BY	Martin Long
Associated British Ports				ORIGINATOR NO	153091

**STRIDE TREGLOWN**  
 www.stride-treglow.com  
 © Stride Treglow Limited 2017

**PROJECT**  
 ABP New Manufacturing Plant  
 Land adjacent West Way Road  
 Alexandra Docks  
 Newport

**DRAWING TITLE**  
 GA Plan - Level 00

SUITABILITY STATUS	SCALE
PL : PLANNING	1 : 200 @ A0

PROJECT   ORIGINATOR   ZONE   LEVEL   TYPE   ROLE   CLASS   NUMBER	REVISION
153091-STL-00-00-DR-A-ZZZZ-01002	P29