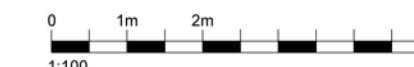








NOTES:
 Copyright: Chetwoods (London) Limited. No implied licence exists.
 Contractors must verify all dimensions on site before commencing any work or shop drawings. This drawing is not to be scaled. Use figured dimensions only.
 Building areas are liable to adjustment over the course of the design process due to the ongoing construction detailing developments.
 Please note the information contained within this drawing is solely for the benefit of the employer and should not be relied upon by third parties.
 The CDM hazard management procedures for the Chetwoods aspects of the design of this project are to be found on the "Chetwoods - Hazard Analysis and Design Risk Assessment" and/or drawings. The full project design teams comprehensive set of hazard management procedures are available from the Principle Designer appointed for the project.




Materials Key:

Insulated Metal Panel
 Supplied by: Kingspan Evolution
 NBS Ref: H92

-  Blue White
-  Baltic Blue
-  Chalk Blue
-  Bluebell
-  Sapphire Blue

 **Curtain Wall Glazing**
 Supplied by: Sapa
 NBS Ref: H11

 **Blue Engineering Brick Plinth**
 Supplied by: Taylor Maxwell
 NBS Ref: F10

 **Windows with Blue Tint Glass**
 Supplied by: Sapa
 NBS Ref: L10

 **Perforated Metal Plant Screen**
 Supplied by: Italfim
 NBS Ref: L10/650

Notes:

Royal Navy sign to be illuminated along with individual 'HMS CAMBRIA' lettering.



1 West Elevation
 1:100

Rev	Revision Description	Date	Author/Reviewer
PL 3	Signage updated	16/01/18	ST
PL 2	Expansion area between CL 6 & 8 added	08/01/18	ST
PL 1	Revised to reflect VE scheme	22/12/17	ST

PLANNING
 32 Frederick Street,
 Birmingham, B1 3HH
 +44 (0)121 234 7500
 www.chetwoods.com



Project
SECURE TRAINING FACILITY

Client
ABP

Drawing Title
WEST ELEVATION

Scale	Size	Drawn	Checked	Date
1:100	A1	ST	LF	15/12/17

Project	Originator	Zone	Level	Type	Role	Number	Rev
4079	CHT	00	00	DR	A	02113	PL 3